







beamex

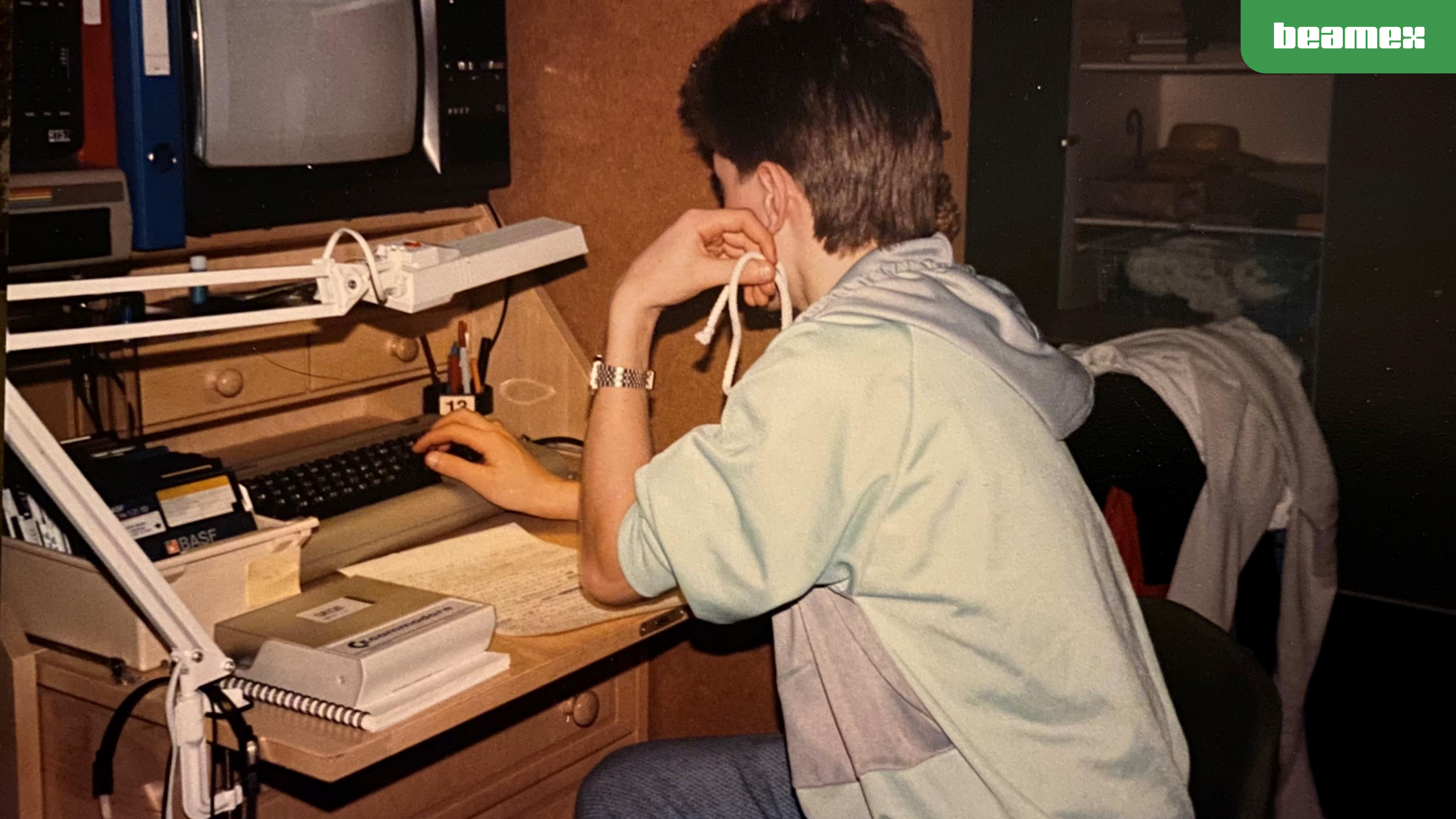






beamex

FOR A SAFER AND
LESS UNCERTAIN WORLD

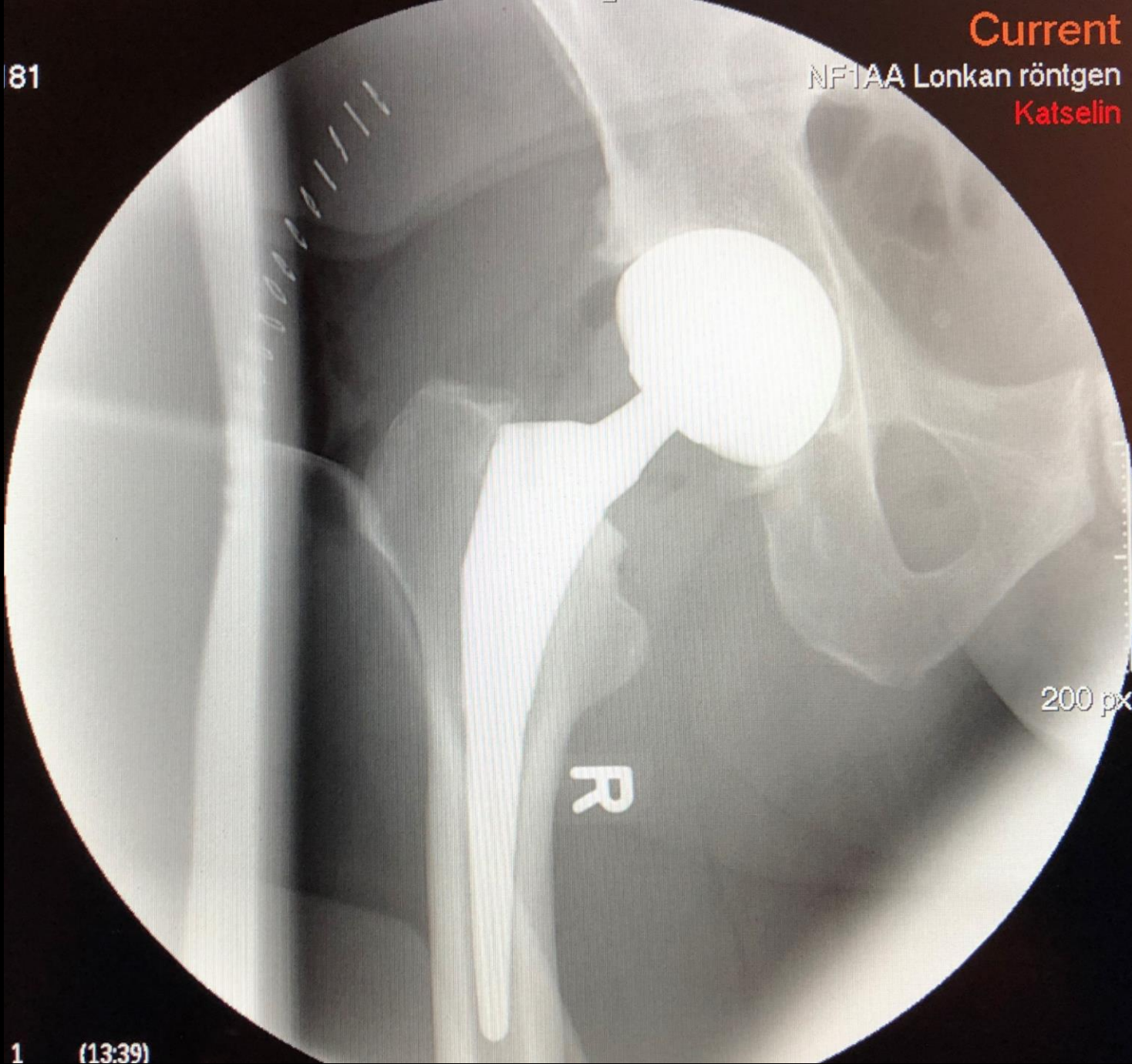






Current
NF1AA Lonkan röntgen
Katselin

81



1 (13:39)



CHALLENGE

We need to be compliant

SOLUTION

Quality system, ISO9001, ISO17025, calibration program, digitalization

FUTURE

Industry 4.0, AI, IoT, Metaverse

CHALLENGE

~~We need to be compliant~~

SOLUTION

~~Quality system, ISO9001, ISO17025,
calibration program, digitalization~~

FUTURE

~~Industry 4.0, AI, IoT, Metaverse~~

CHALLENGE

Clean water, health, energy, food, sustainability

SOLUTION

Make the world safer and less uncertain by providing trustable measurements that are transparent and available for all

FUTURE

Learn from the past and make sure the future is better for generations to come

232°C

THE TEMPERATURE WE ROAST AT TO
CREATE THE UNIQUE FLAVOUR, AROMA AND
COLOUR OF GUINNESS



232°

The barley is now fully roasted and is transformed into our famous roasted barley. The roaster confirms that the roasted barley is perfectly roasted, the grain is uniquely black and roasted throughout with an amazing roasted coffee and chocolate aroma. It is brittle in texture and taste is an explosion of intense roasted coffee and chocolate. Now you can appreciate



225°

Nearly the final product and has a similar look to roasted barley, but take a closer view- the grain needs more roasting and time. Its nearly there, but good things come to those who wait...



190°

The barley grain starts to crystallise, there is a noticeable change in colour, darker and looks and tastes like crystal malt - crunchy, sweet & aromatic with some burnt notes. It's well on its way!



0°

The fresh barley grain begins its roasting journey. Its pale in colour, very hard in texture and has a grainy aroma.

STEVEN SPIELBERG PRESENTS



BACK TO THE FUTURE

PG

A ROBERT ZEMECKIS FILM













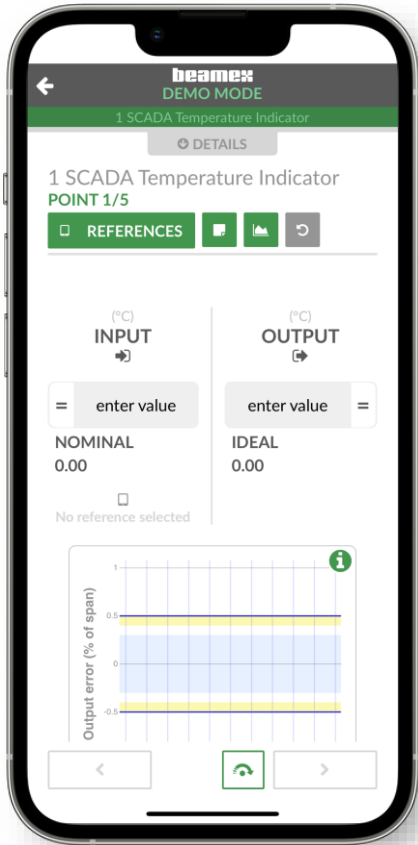
beamex

RESEARCH





OPC UA



An underwater photograph of a coral reef ecosystem. In the foreground, there are large, porous, light-colored coral structures. Several colorful fish are swimming around, including a large silver fish with black vertical stripes at the top right, a yellow and black clownfish in the center, and a blue and red fish on the left. The water is clear and blue, with sunlight filtering through from the surface.

beamex

ECOSYSTEM



Calibration
Service
Provider



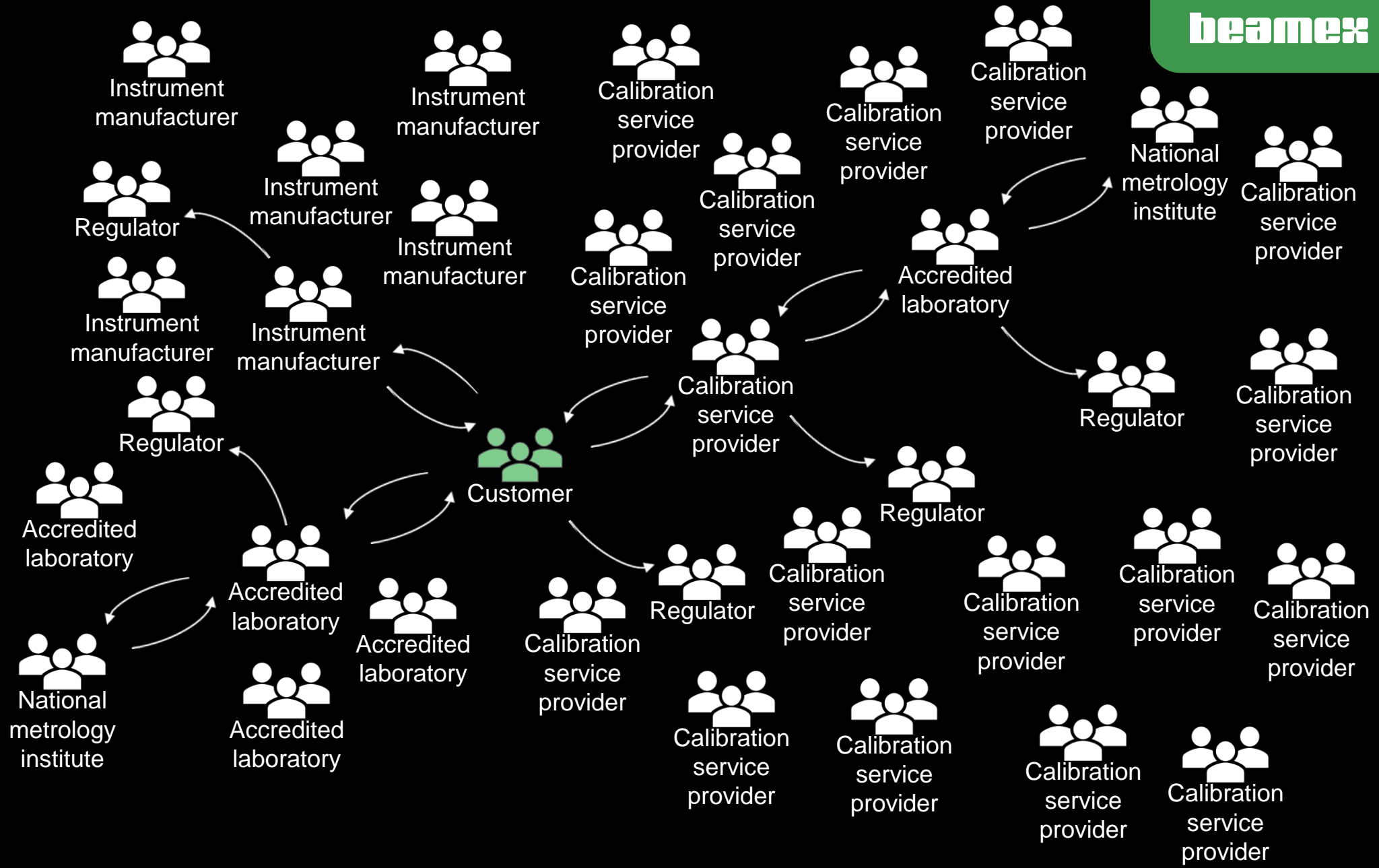
Accredited
Laboratory

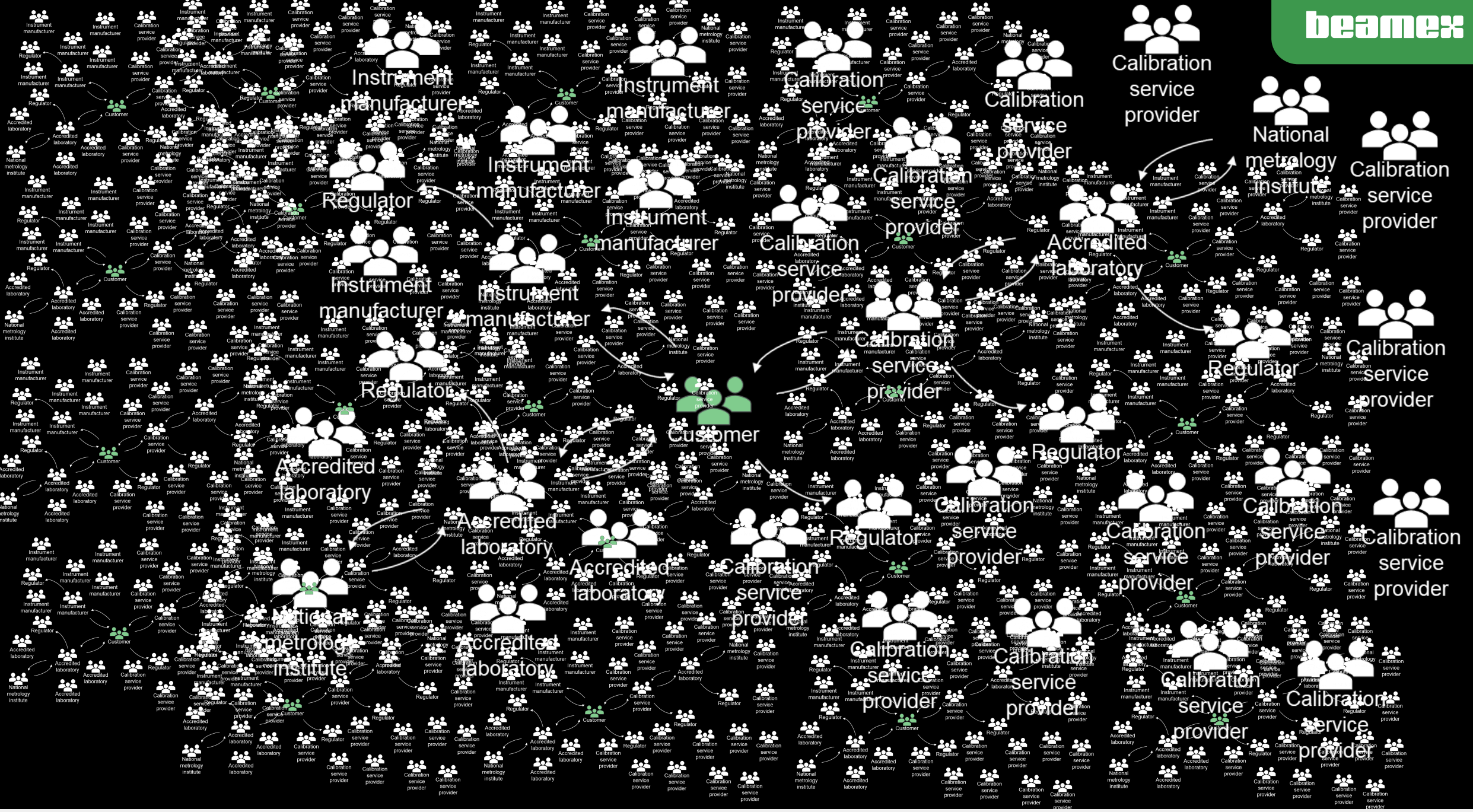


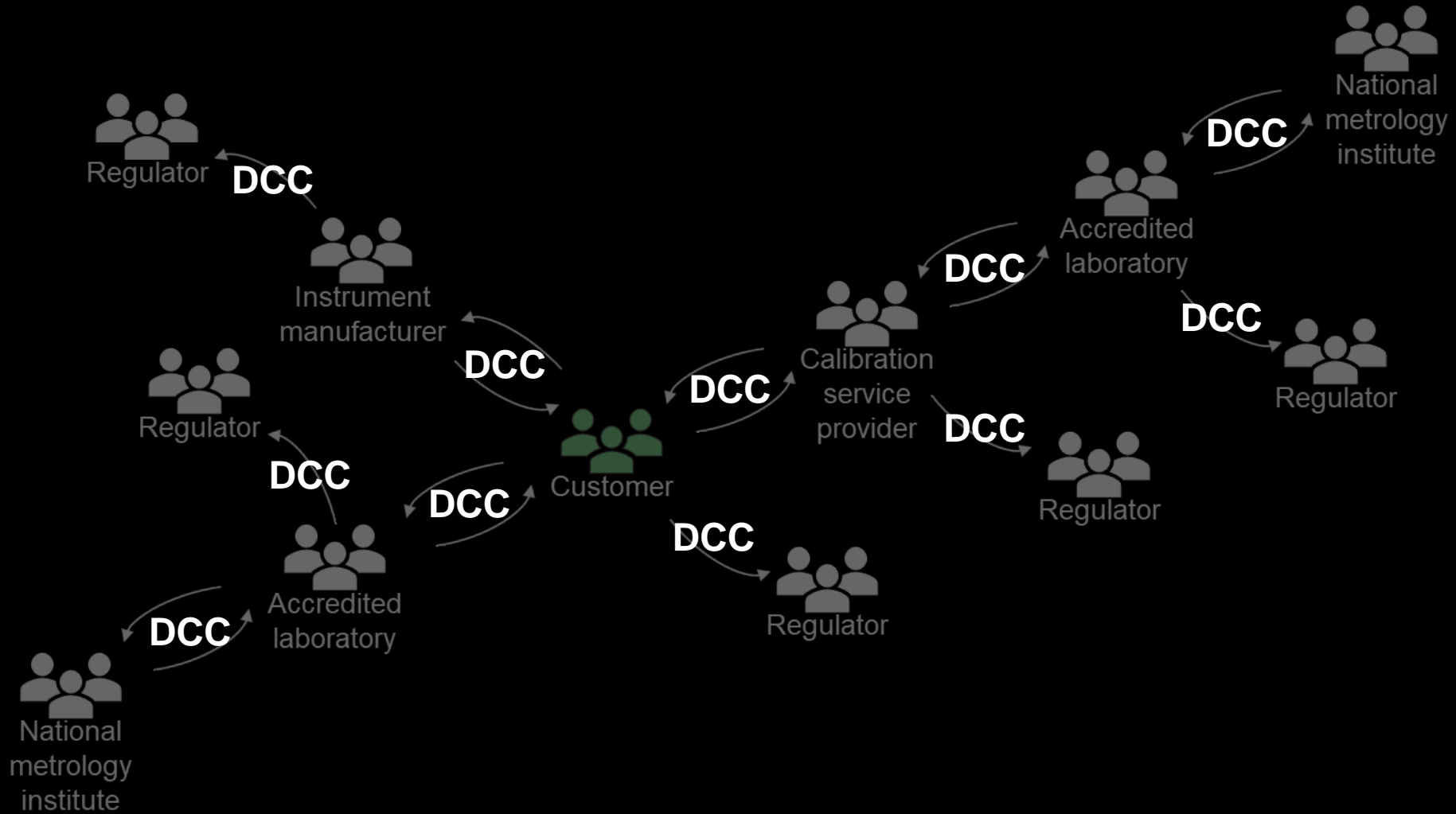
Customer



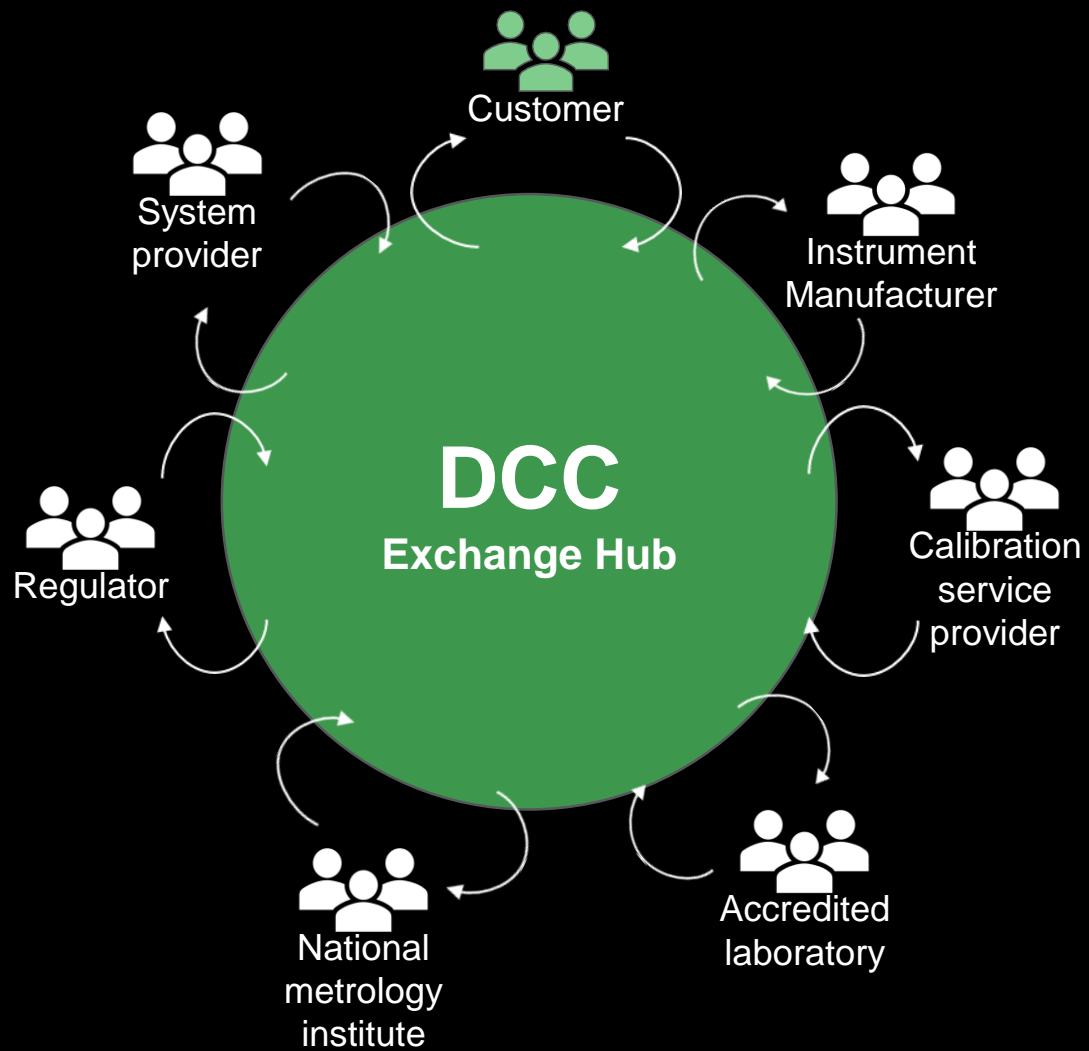
Instrument
Manufacturer







Calibration Ecosystem



A CLOSED OR AN OPEN ECOSYSTEM?



Linux

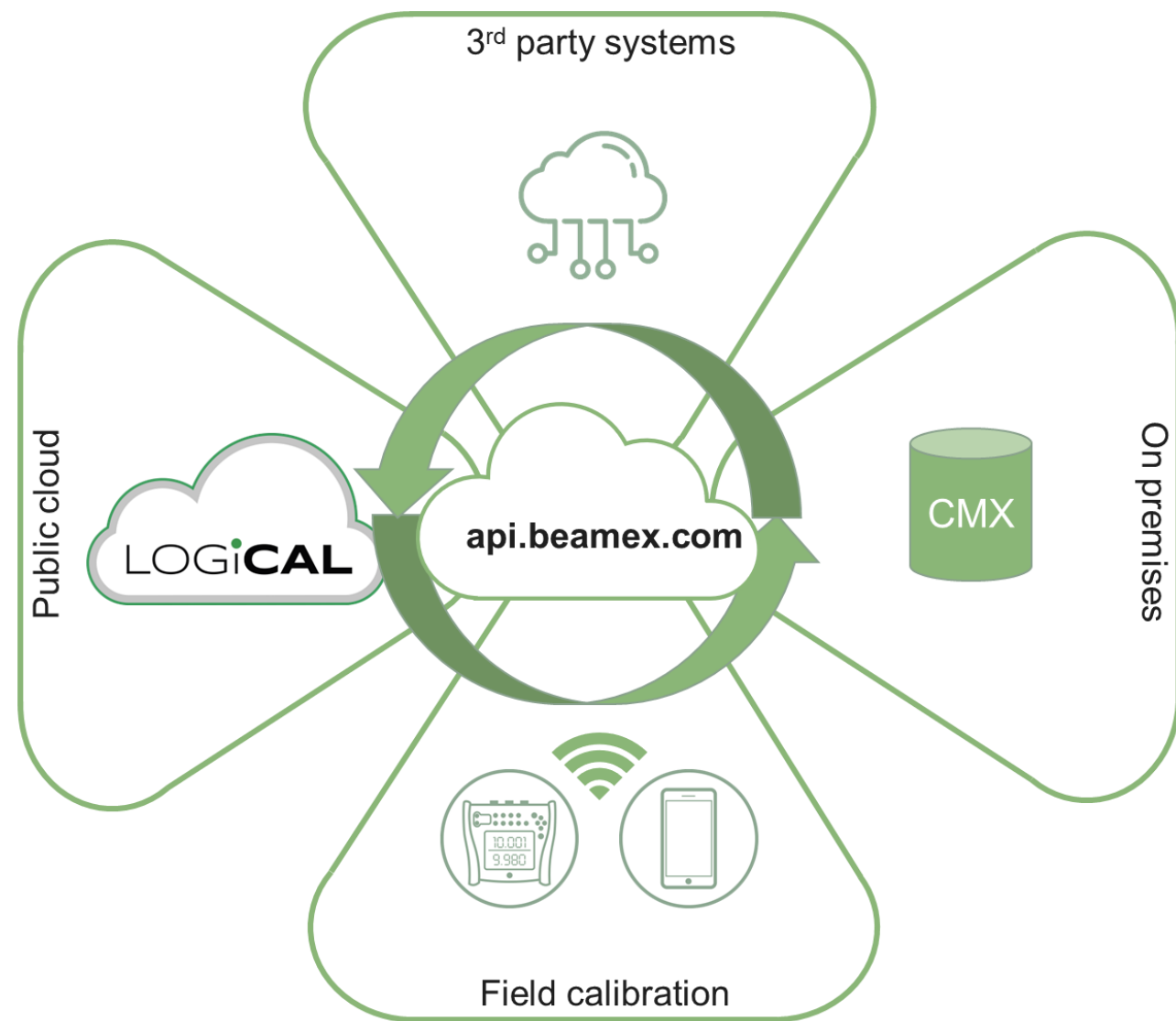
CLOSED

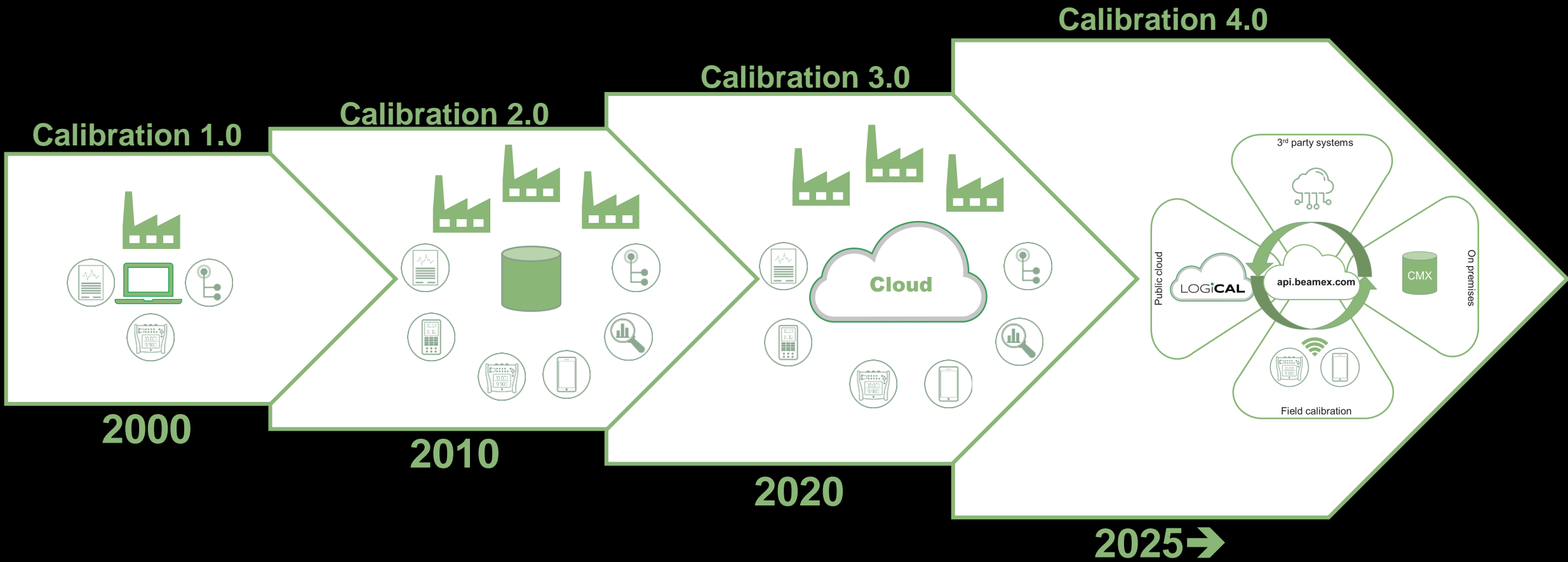
OPEN

CALIBRATION ECOSYSTEM

The future calibration ecosystem will enable:

- collaboration and exchange of calibration data across organizations independent on platform
- separation of “managing calibrations” from “performing calibrations” allowing for calibration technicians to only use mobile technology (anywhere, any device)
- Easier outsourcing as 3rd party technicians can use own technology synchronizing results back to client database
- Industry to leverage future state-of-art cloud technologies (AI, sensor neural network, data analytics etc.)





HOMEWORK

- AI, Digital Twin & Metaverse technologies are developing now rapidly, are we ready?
- Cloud vs Edge computing
- Machine Learning (AI)
- Cybersecurity
- Your process gets better by using others data...
- ARE WE WILLING TO SHARE?



beamex

beamex

**FOR A SAFER AND
LESS UNCERTAIN WORLD**

