

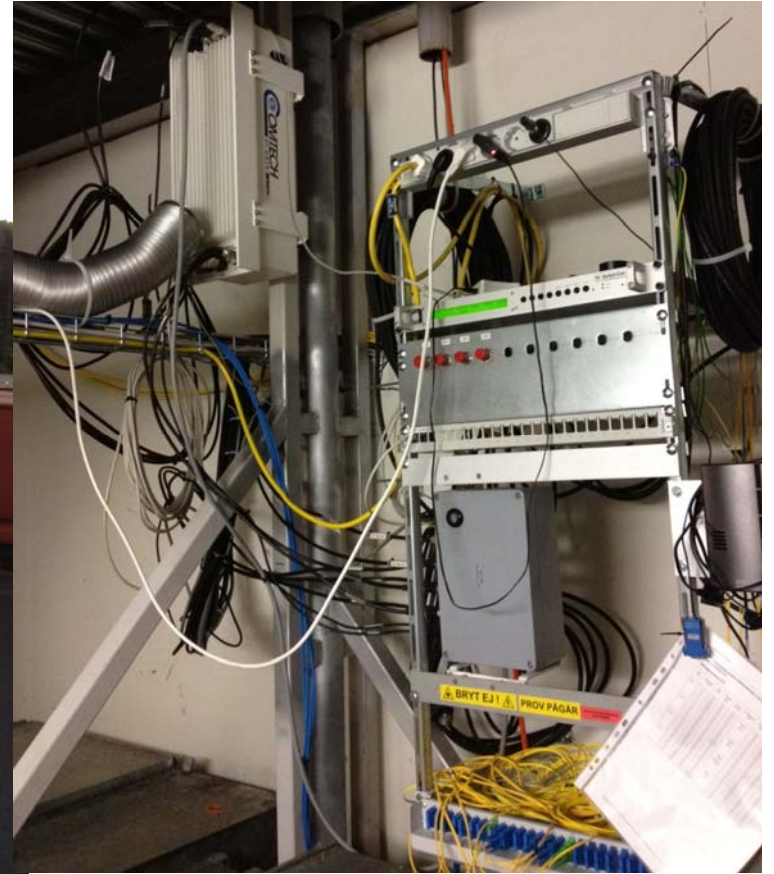
Station Report SP

Carsten Rieck and Kenneth Jaldehag
SP Technical Research Institute of Sweden
Borås, Sweden

20th CCTF WG-meeting on TWSTFT
6th/7th September, 2012
BIPM



SP Technical Research Institute of Sweden



- 1.8 m, 8 W SSPA, ComTech transceiver
Satre262, TT-SATSIM
- UTC(SP) = 4 sites
 - 4CS+2HM@SP, 1CS+2HM@OSO
 - 8CS+4HM@STUPI, 6CS@Sthlm
- current fulltime staff 4-5

Current Situation

- TW@SP considered production, research priorities currently elsewhere
- Transceiver/SSPA "0dBm" problem
 - due to exchange transceiver from TT Sep.2010
 - “unpredictable” periods (hours to several days)
 - no temperature correlation
 - so far “no” impact for TAI link, but has to be fixed, need help from TT
- SATSIM currently not used, open question on how SATSIM influences production use
 - out-of-band CC, disturbances had been seen by SAT provider
 - new SATSIM antenna
- RT streaming server not reachable due to router line card failure summer 2012
 - new routing hardware
 - separate/redundant/high_capacity ISP for Time and Frequency use with the Swedish University Network SUNET during fall 2012



Future Development

- TW installation for the EU/US network might need to move due to a new HighVoltage laboratory in line of sight for low elevations ($<6^\circ$).
- new station equipment ?
Asian Link ?
- upgrade SATSIM with a motorized antenna system
- study effect of satellite motion on the TW timing
- RT filtering, RT infrastructure and methods

