

USNO Station Report

Jonathan Hirschauer

Demetrios Matsakis

METAS

September 17-19, 2007

Time Transfer Team

Jim Brad

Angela McKinley

Lee Breakiron

Mark Bergman

Jonathan Hirschauer

Jonathan Morales (new)

Evan Hoffman (new)

Issues Addressed at AMC

- AMC1
 - Transceiver, LNC, and antenna are all outside
 - New fibers, old modules
 - Diurnals $> 1\text{ns}$
 - Due to fiber modules and transceiver temperature
- AMC2
 - LNC and antenna outside
 - Transceiver inside, no thermal regulation
 - New fibers, new modules
 - Diurnals $\sim 1\text{ns}$

TWSTFT Calibration

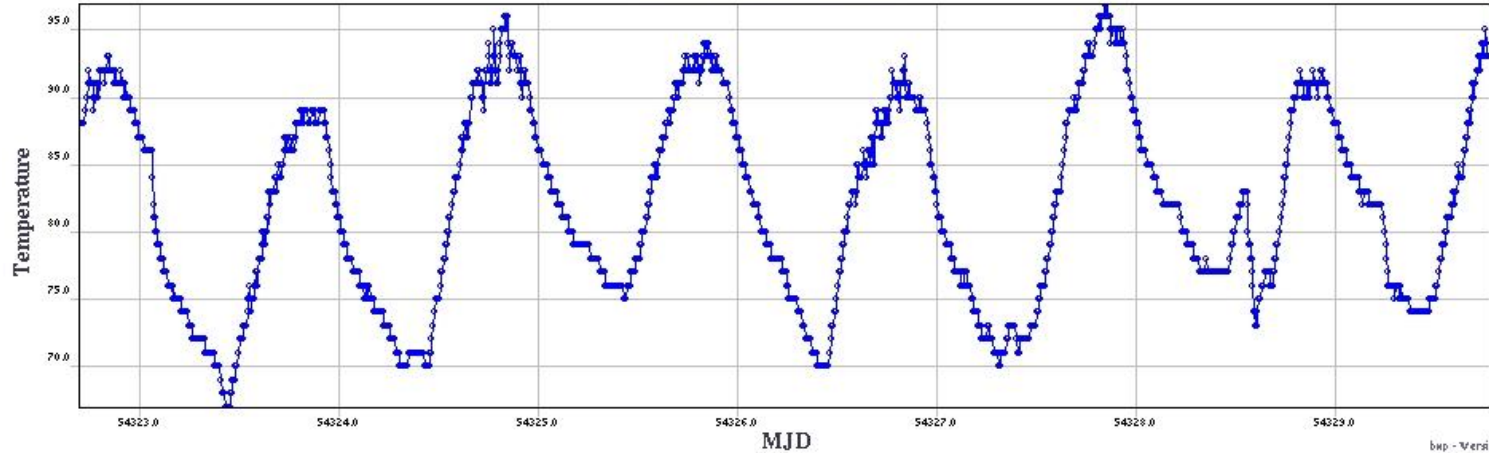
- Flyaway TWSTFT systems
 - Shipping costs too high
 - Use smaller more portable equipment
- Carrier Phase GPS
 - For verification of TWSTFT calibration
 - Installation Issues
 - Many cycle slips, antenna in non-ideal location
 - Novatel OEM3 – uses trailing edge of pulse
 - Data surprisingly good, though it seems too good
 - Upcoming: New receiver to test, Novatel OEM4

What we hope to do next year

- Set up station in Hawaii
 - Still in progress
 - State Department handling negotiations
- Upgrade TWSTFT systems
 - Develop system for data acquisition and control
 - Temperature stability and Diurnals
- Still in our dreams
 - High and Low-bandwidth experimentation
 - Timetech Satsim on shelf waiting to be tested at USNO

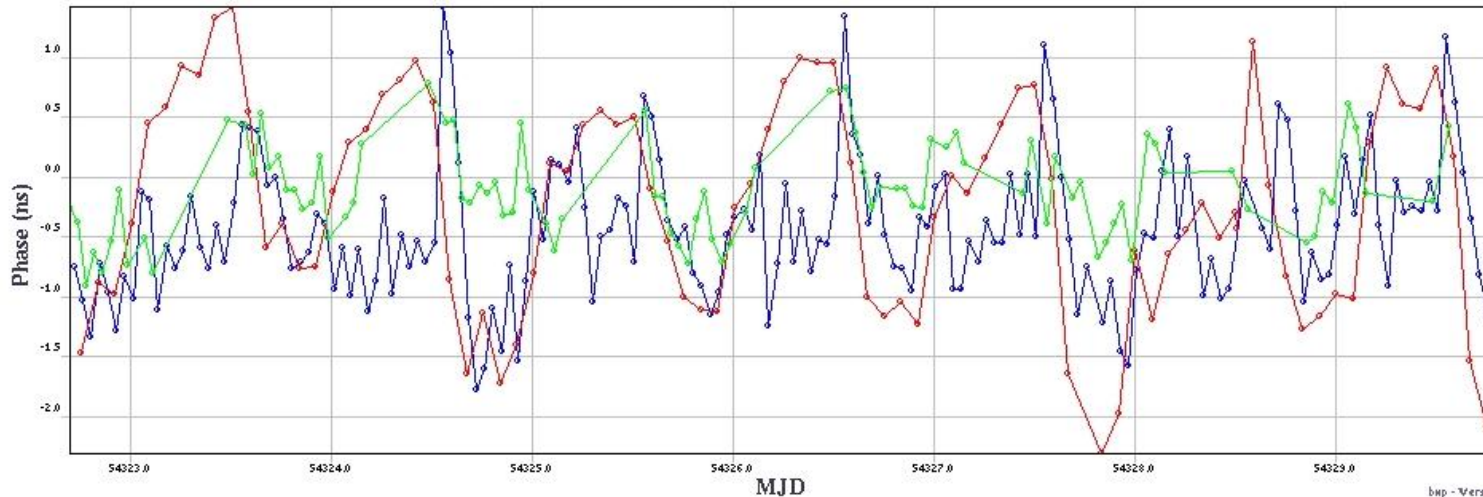
Temperature and Diurnals

Temperature (Degrees F)



bup - Version: 6.0.2

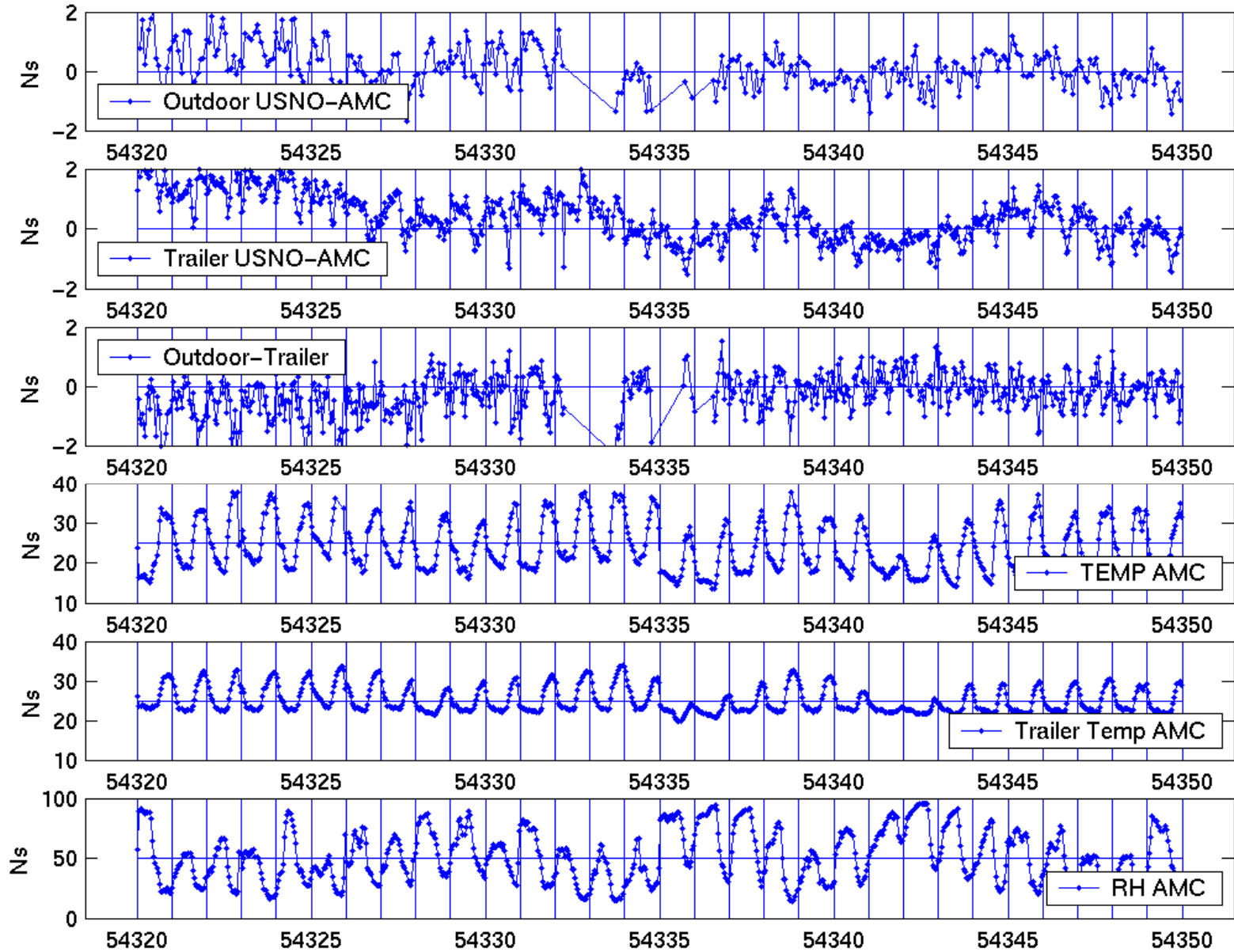
USNO Outdoor Earth Stations vs. Temperature Controlled



bup - Version: 6.0.2

Temperature Effects are Not Easily Modelable

UTC(USNO)-AMC, and environmental



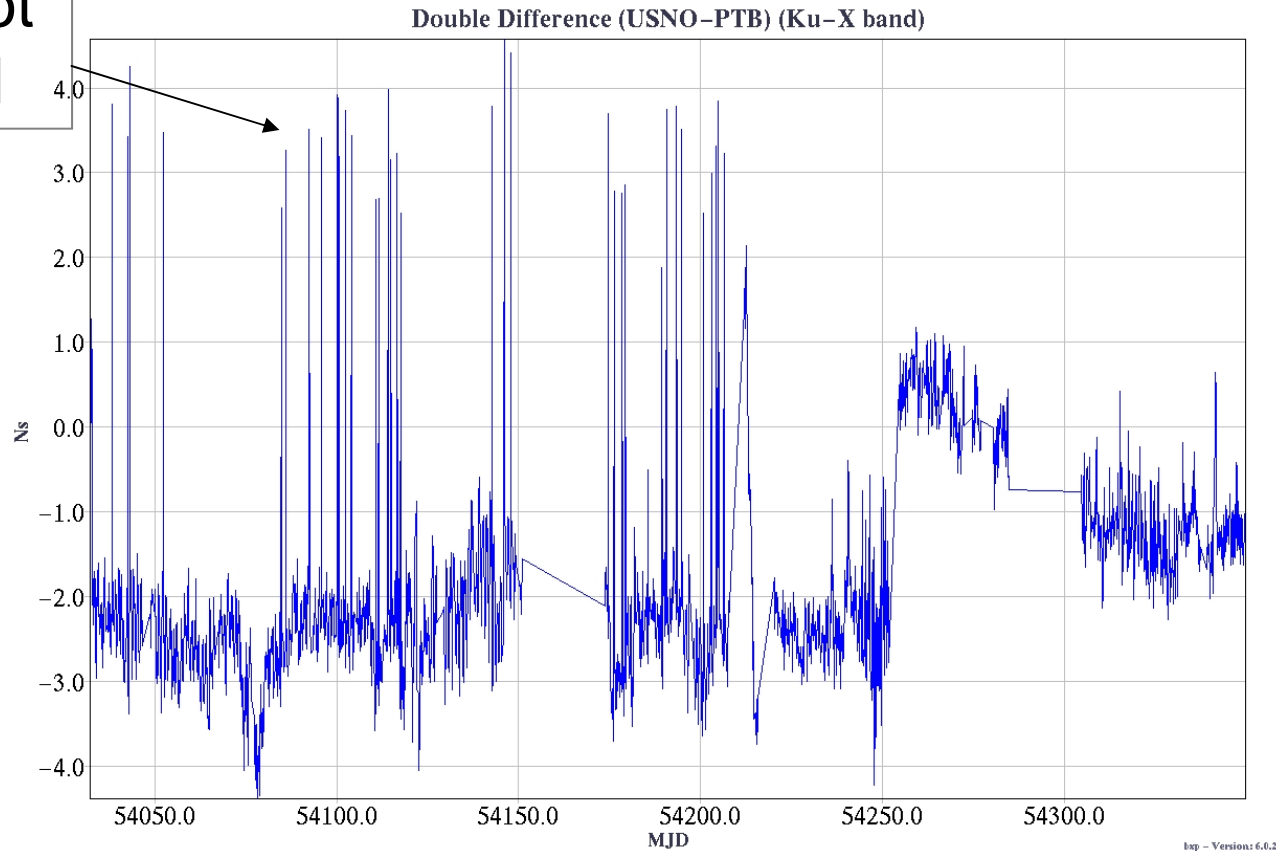
USNO-NIST Calibration

May 16, 2007 (MJD 54236)

- UTC(USNO)-UTC(NIST)
 - TWSTT calibration 16.4 ns
 - GPS CV 11.4 ns
 - Circular T 10.7 ns
 - Via PTB: Ku (NIST)+X band (USNO) 10.4 ns
 - Via PTB: Ku-band (ITU) 8.2 ns
- Analysis Error, in ITU-format corrections
 - USNO-PTB, Ku(ITU)-X -2.5 ns
 - USNO-PTB, Ku(ITU)-Ku(1sec) -2.1 ns

USNO-PTB link differences since the Ku-band Satellite Change

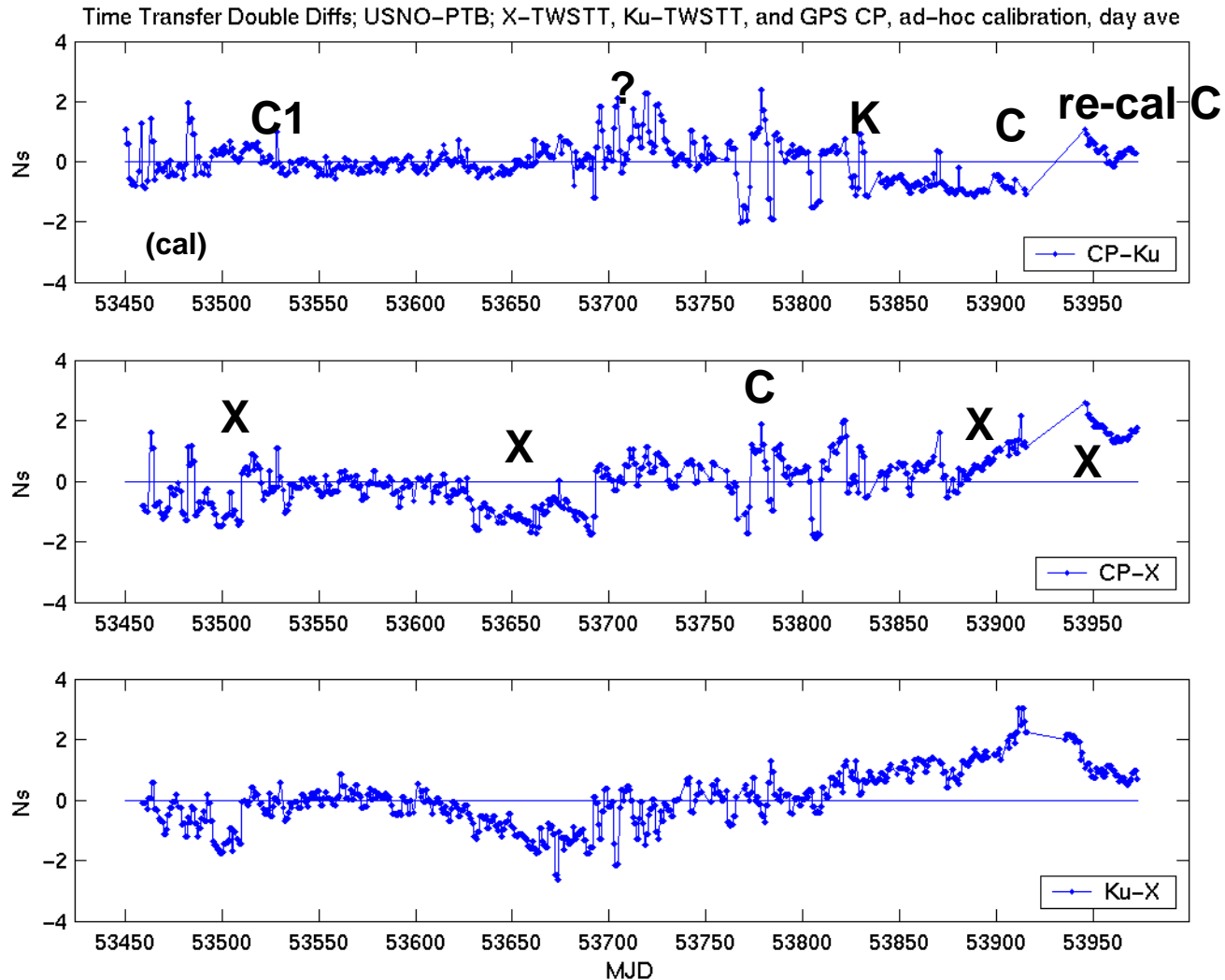
Outliers not removed



PTB Modem change

No Hardware is Perfect

K,X,C identify technique at fault (C=CP)



Carrier Phase GPS Receivers Under Test

UNITS

