

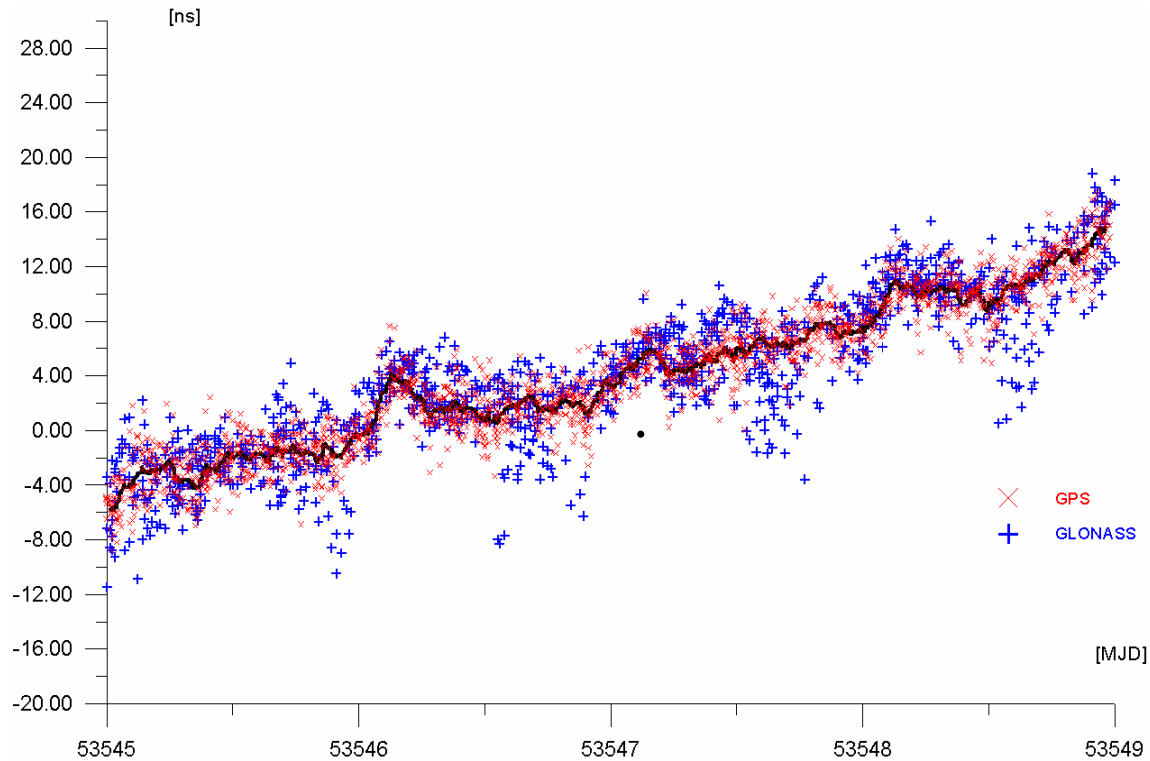
# GLONASS Time Transfer

---

- **GLONASS constellation is progressing: about 15 operational satellites now.**
- **About 12 laboratories are equipped now with newest GPS/GLONASS receivers, mainly OP, PTB and VNIIFTRI. They are being now calibrated.**
- **Tests of GLONASS common-views are showing similar performance to GPS.**
- **BIPM will start soon GLONASS Time Transfer Pilot Project.**

# An exemple of GPS+GLONASS Common-View

---



**AOS - BIPM, distance 1200 km, rms = 1.8 ns**